

SINGLE & DOUBLE

NEW GENERATION RELAY SWITCH



 **FIBARO**[®]
Home intelligence

GENERAL INFORMATION

Switch 2 available as a Single and Double option was designed to activate and deactivate electrical devices. Thanks to its small size it can be mounted in junction boxes or inside device casings. The module is controlled either through the Z-Wave network or a simple switch. Power and energy usage measurement feature allows you to monitor and lower your utility bills. Connect your FIBARO Switch 2 to the system and other devices to enjoy the almost endless possibilities!



GENERAL INFORMATION

- Built-in scene activation mechanism
- Security and notification communication classes
- Configuration menu with a diode
- Latest generation Z-Wave 500 series chip
- Z-Wave Plus protocol
- Energy and power measurement of connected devices
- Supports secure mode (Z-Wave Network Security) encrypted with AES-128



TECHNICAL DATA

Full certification compatibility confirmed by FCC, DEKRA, Z-Wave

- Power supply: 100-240V AC, 50/60 Hz
- Single Switch 2 (FGS-213)

USA (120V) 6.5A

UE (240V) 8A

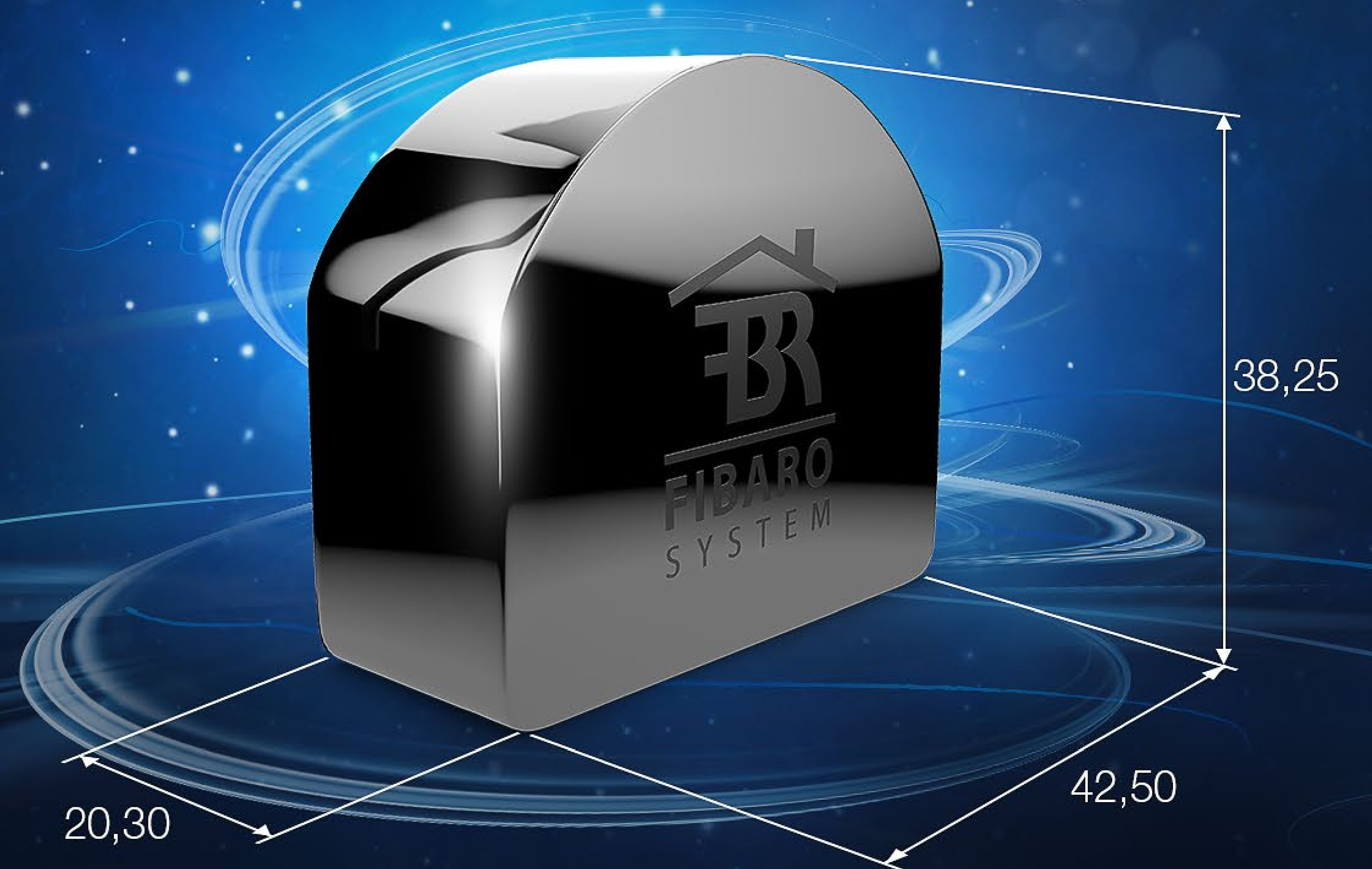
- Double Switch 2 (FGS-223)

USA (120V) 6.5A per channel

USA (120V) overall device load 9.5A

UE (240V) 6,5A per channel

UE (240V) overall device load 10A



FEATURES

- A complex system of control for each channel
 - Standard control
 - Delayed device activation
 - Delayed device deactivation
 - Auto on* and *auto off* mode with additional options
- A complex system of scene activation for each channel (scene management)
 - 1 to 3 presses and holding the key pressed down can be mapped to four different actions
- Very accurate energy measurement +/- 1 % for power above 5W
- Smart notifications
- Sockets with more convenient connectors
- User-friendly configuration menu
- Z-Wave network coverage tester
- Software updates*



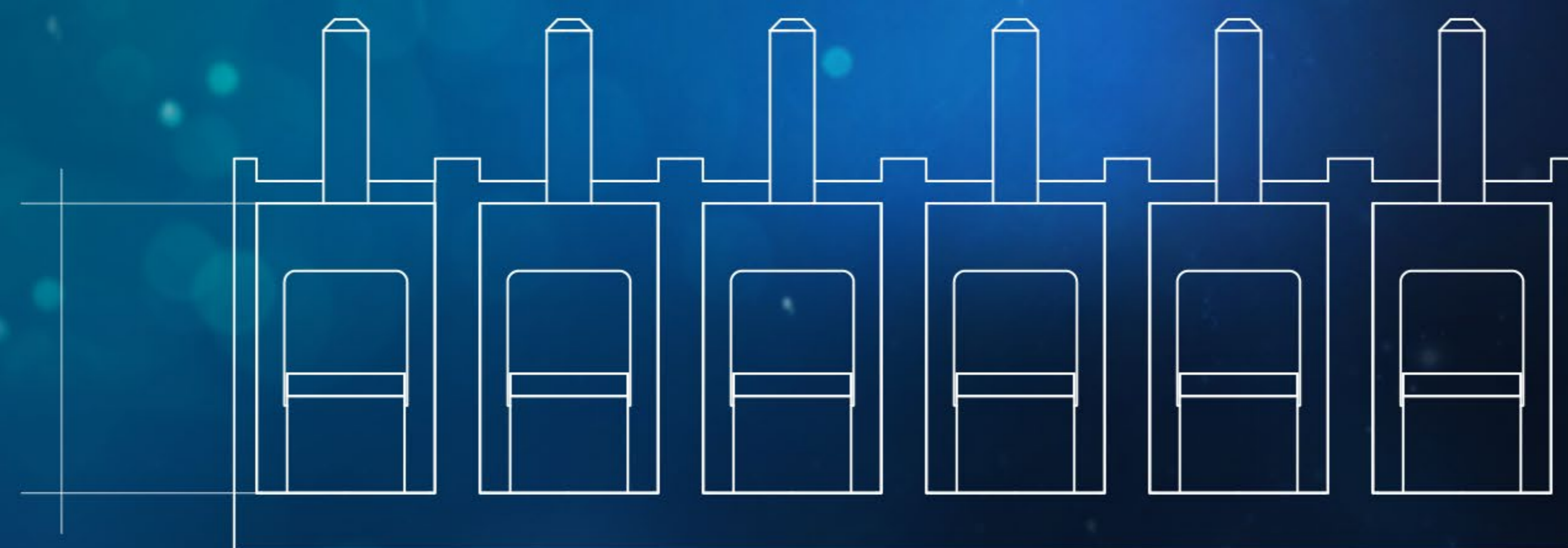
*depends on the controller

CONVENIENT SOCKETS – EASY INSTALLATION

Single/Double Switch 2 is equipped with sockets that have an increased cross-section which allows you to connect it to wires with a larger diameter and simplify the installation process.



6,45 mm






USER-FRIENDLY CONFIGURATION MENU

A built-in RGB diode is of invaluable assistance during the installation process. The light will show whether Single/Double Switch 2 has been added or removed from the network.

You can also see whether a calibration or an update was successful.



-  **GREEN**
Reset the energy usage measurement memory
-  **PURPLE**
Test the range of the Z-Wave network
-  **YELLOW**
Restore to factory settings

Z-WAVE NETWORK RANGE TESTER

Use Single/Double Switch 2 to check the signal quality in the Z-Wave network.
The built-in RGB diode will help you verify whether the place you selected
for installation is in its range.



A STRONGER SIGNAL

Single/Double Switch 2 has an increased signal range which gives you more installation possibilities and an increased network coverage.

SINGLE
DOUBLE SWITCH 2

RELAY SWITCH



SOFTWARE UPDATES*

You can update your software to the latest version once it becomes available.
This way you have access to the latest functionalities without having
to buy the latest version of the device.



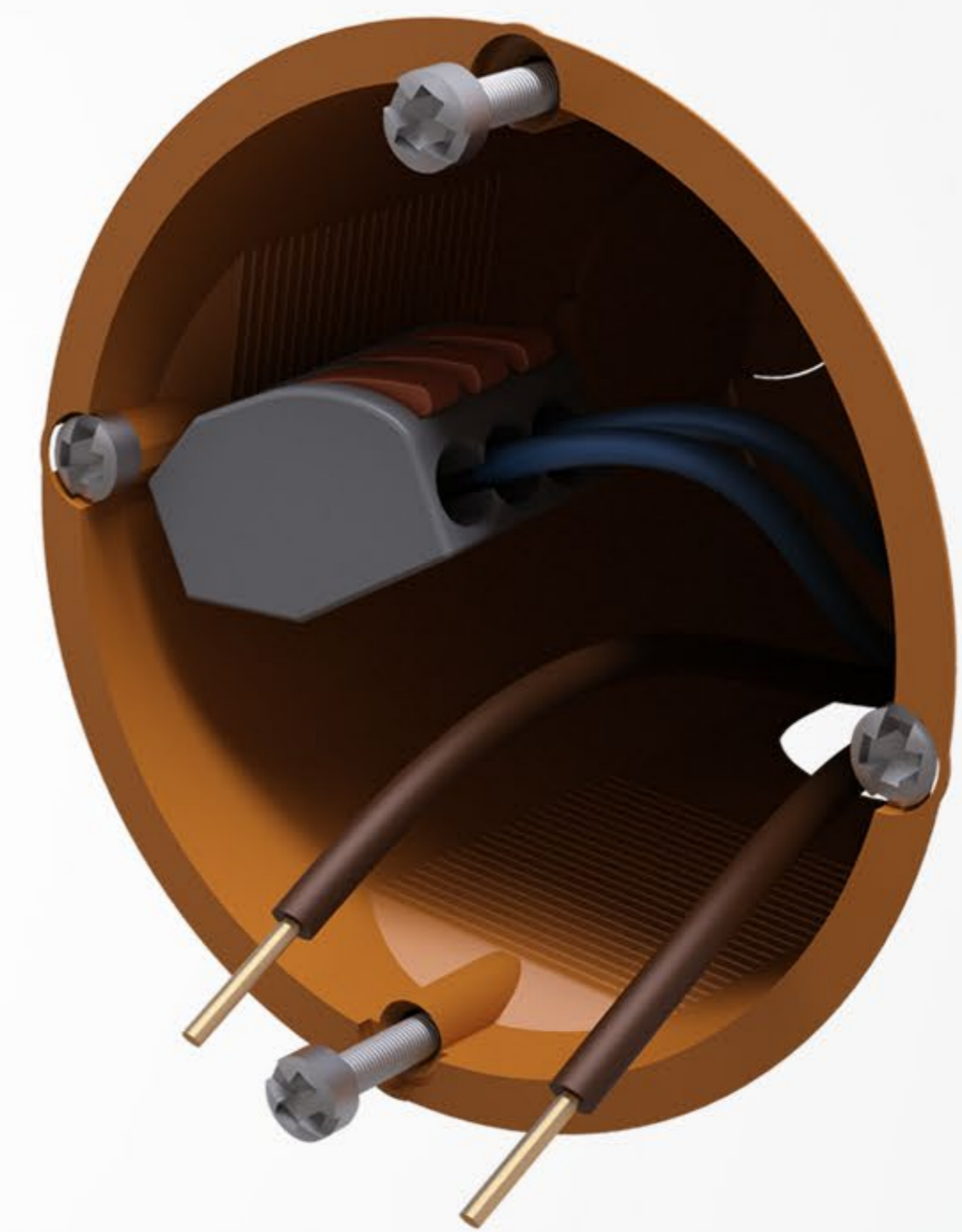
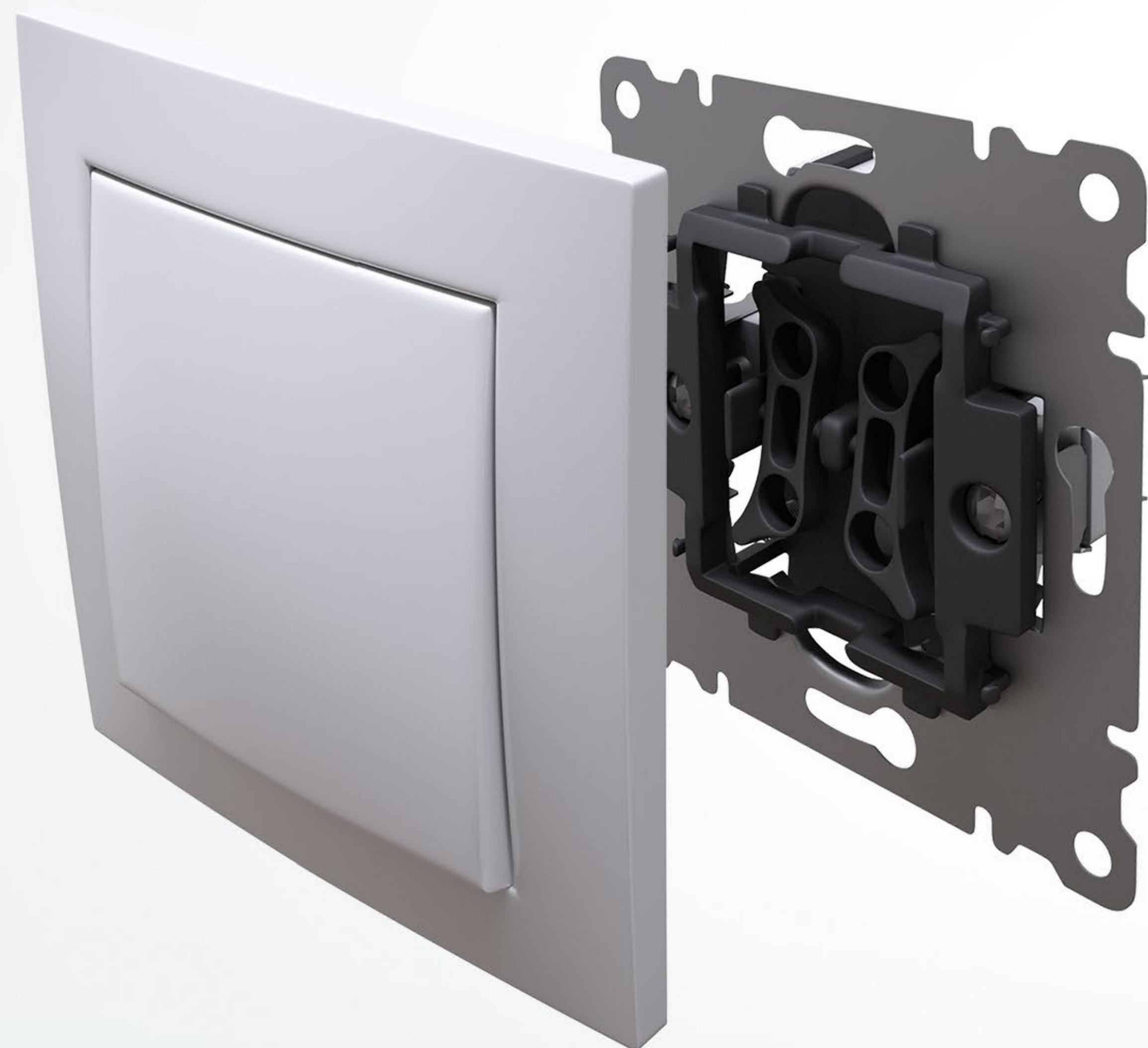
APDATES IN PROGRESS



*depends on the controller

EASY TO MOUNT

Just place the module in the junction box and connect it to an existing installation.
The module's miniature size allows you to place it in many convenient spots.



SCENE MANAGEMENT

Even the most complex actions can be activated via a wall switch connected to a module. With just a press of the button when entering a room, it's as natural as turning on the lights.

Activate the **RELAX** scene



SMART NOTIFICATIONS

Single/Double Switch 2 features many safety measures that prevent it from voltage drop, overheating, or overcharging. In the case of any of these events, the system will immediately send you a notification.



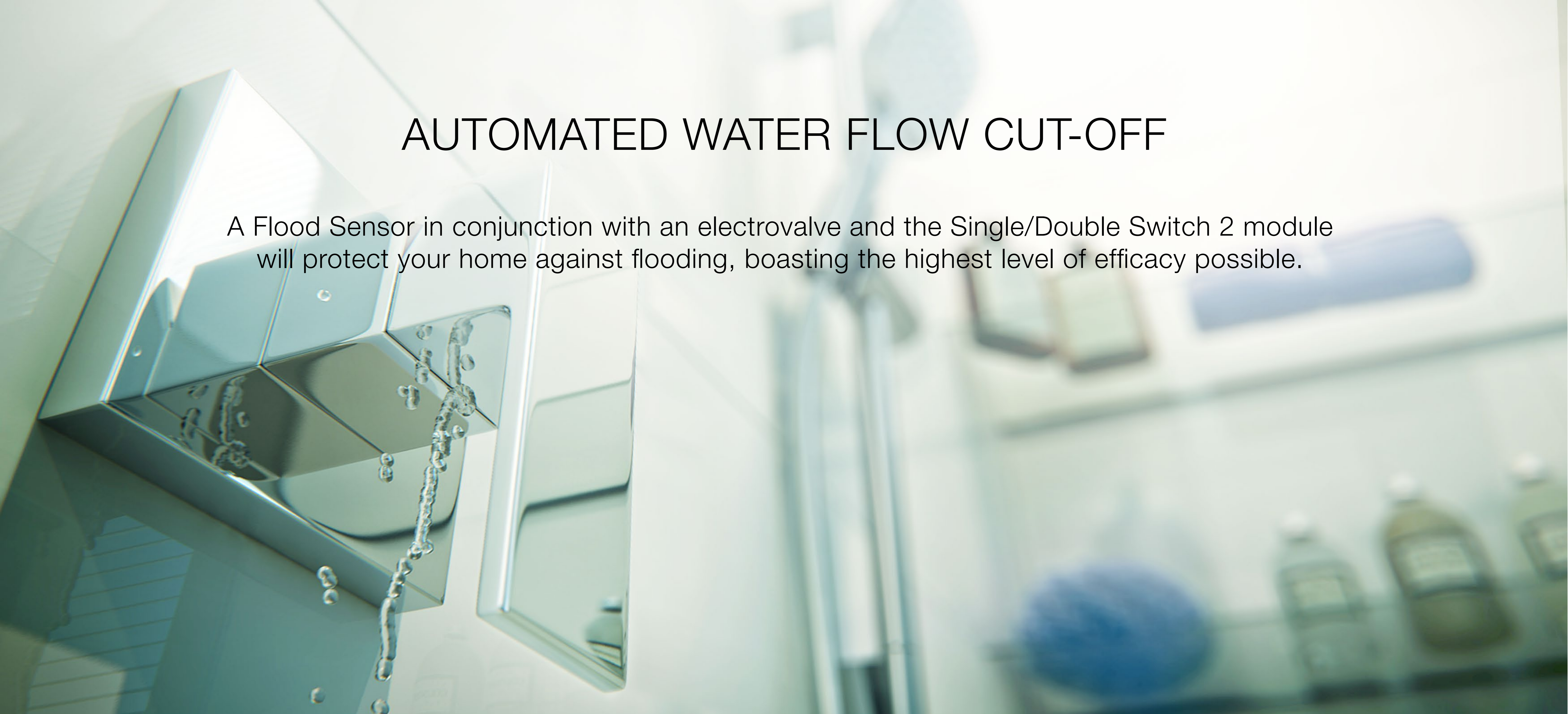
NOTIFICATIONS ABOUT UNUSED DEVICES

Single/Double Switch 2 allows you to monitor electrical devices that are currently inactive. The system will notify you if you leave a device running and allow you to turn it off remotely.

There has been no activity in the bathroom for 15 minutes. The device is still active. Deactivate it?

AUTOMATED WATER FLOW CUT-OFF

A Flood Sensor in conjunction with an electrovalve and the Single/Double Switch 2 module will protect your home against flooding, boasting the highest level of efficacy possible.



Attention!
Flood Sensor detected water in the bathroom.
Closing the main water valve.



USAGE LIMITS AND DEVICE MONITORING

This feature allows you to set the top and bottom thresholds for energy usage. After the limit is exceeded the module can notify you or automatically deactivate the device.

Attention!

The refrigerator is using less than 10W of energy. Malfunction possible.

0W

200W

250W

POWER AND ENERGY MEASUREMENT

The new Single/Double Switch 2 allows you to measure the power and energy of the connected load. You can see how much energy is used in your home through clear charts and use that information to reduce your electricity bills.



YOUR MOBILE DEVICE IS YOUR REMOTE



You may control the modules and receive information through your home PCs and mobile devices. Single Switch 2 and Double Switch 2 do not require expensive control panels in order to function.



TAKES CARE OF YOUR KIDS

Are you a parent or do you plan to become one in the near future? Monitoring your children's study and play time, along with the ability to automatically activate their favorite multimedia might interest you.



Disable the ability to run a gaming console during certain hours.

1 6 0 0 - 1 8 0 0

SUPPORT FOR PROTECTION MODE

Surround your children the best care. Single/Double Switch 2 allows you to cut power to domestic appliances when they are not in use.

*option possible while using a contactor

YOUR HOME IS WHEREVER YOU ARE

Single/Double Switch 2 modules, just like the entire FIBARO system, can be controlled from any place on earth. All you need is internet access.



SUMMARY

Single/Double Switch 2 is not just one but two steps forward in managing your smart home. The Z-Wave series 500 chip and the Z-Wave Plus protocol offer capabilities that have not been available before. The power and energy measurement function allows you to optimize your utility bills. By making use of the scene activation mechanism you can further tailor your house to your preferences.

WITH **FIBARO** ONLY YOUR IMAGINATION CAN SET THE LIMIT

TECHNICAL SUPPORT

Detailed technical informations and technical specification of Single/Double Switch 2 modules are to be found in manuals available on-line.

[DOWNLOAD INSTRUCTIONS](#)

